

ezidoesit

Workgroup Edition Server Manager Guide Enterprise Edition

Version 1.2.22

5th May 2009

Copyright © 2007-2009 Starsoft Ltd

The purpose of this User Guide is to help you configure the Ezidoesit SQL database using the Ezidoesit Server Manager software. This document is specific to a feature which is only in Ezidoesit Enterprise Edition.

Installing and configuring the Ezidoesit Team Management Client is covered in a separate document – the Ezidoesit Team Management User Guide.

There is further help on the Ezidoesit website at www.ezidoesit.com.

Installation Instructions

Ezidoesit Workgroup Edition Server Manager

The install of Ezidoesit Server Manager should be run on the server where SQL Server is installed (or will be installed if you are going to use Server Manager to download SQL Server Express Edition from Microsoft) and the Ezidoesit database will be created.

The Server Manager install will install the Microsoft .NET Framework 2.0 and Windows Installer 3.1 prerequisites if they are not already installed on the server.

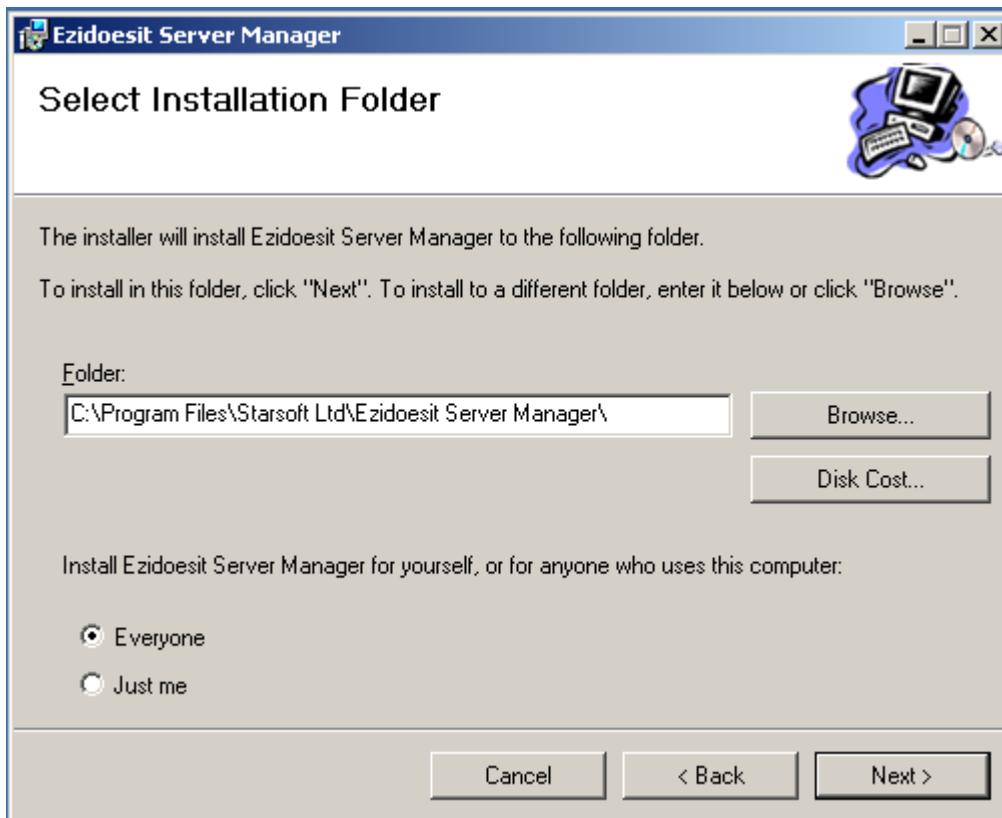
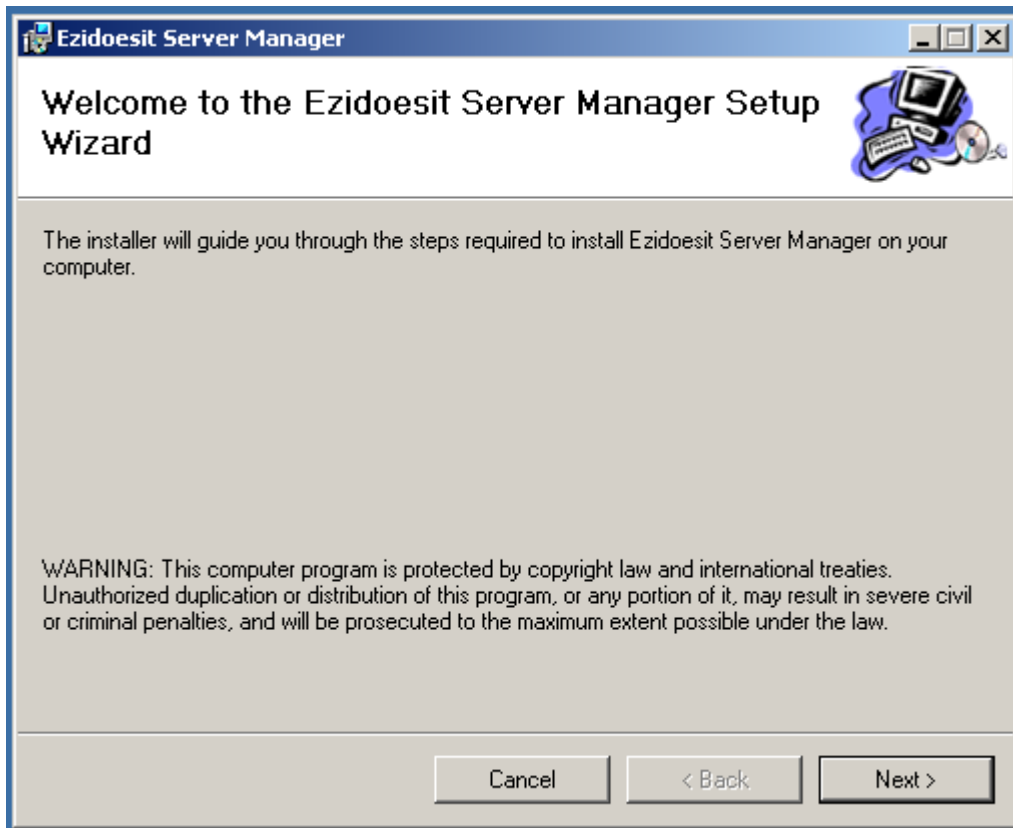
Once the above prerequisites are installed, the Ezidoesit Server Manager is installed and the install files for Ezidoesit Outlook 2003 and 2007 are extracted to a folder on the server together with the Team Management Client (this is so these programs can then be installed from a server location onto individual workstations).

Note: The Server Manager is a very small .NET software application.

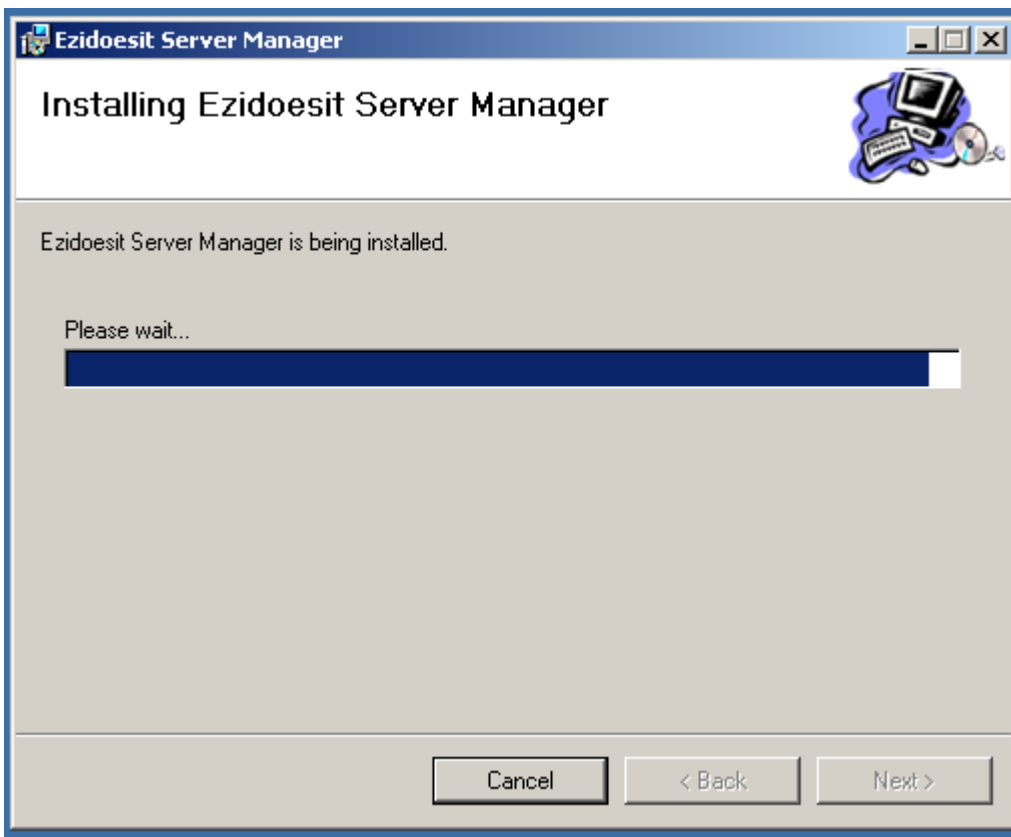
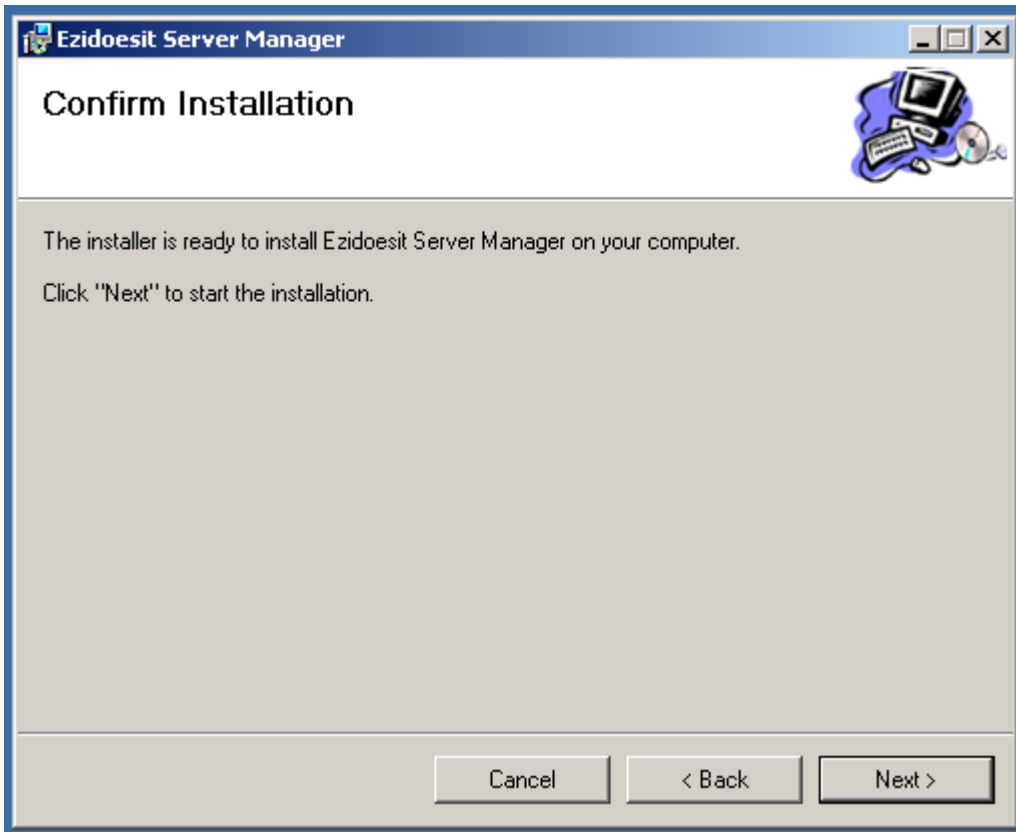
These instruction show screen images for Server Manager for Ezidoesit Enterprise Edition.

Ezidoesit Server Manager Install

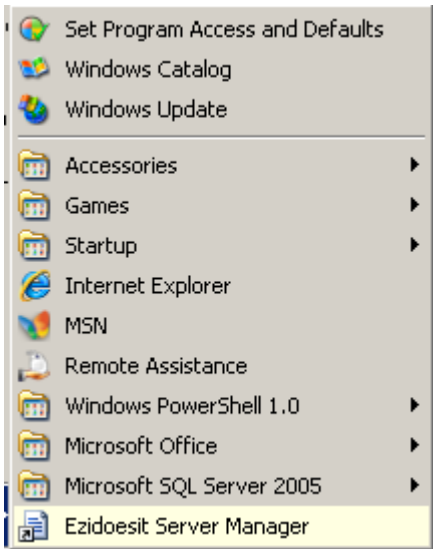
Click on the Server Manager install file to run the installation process.



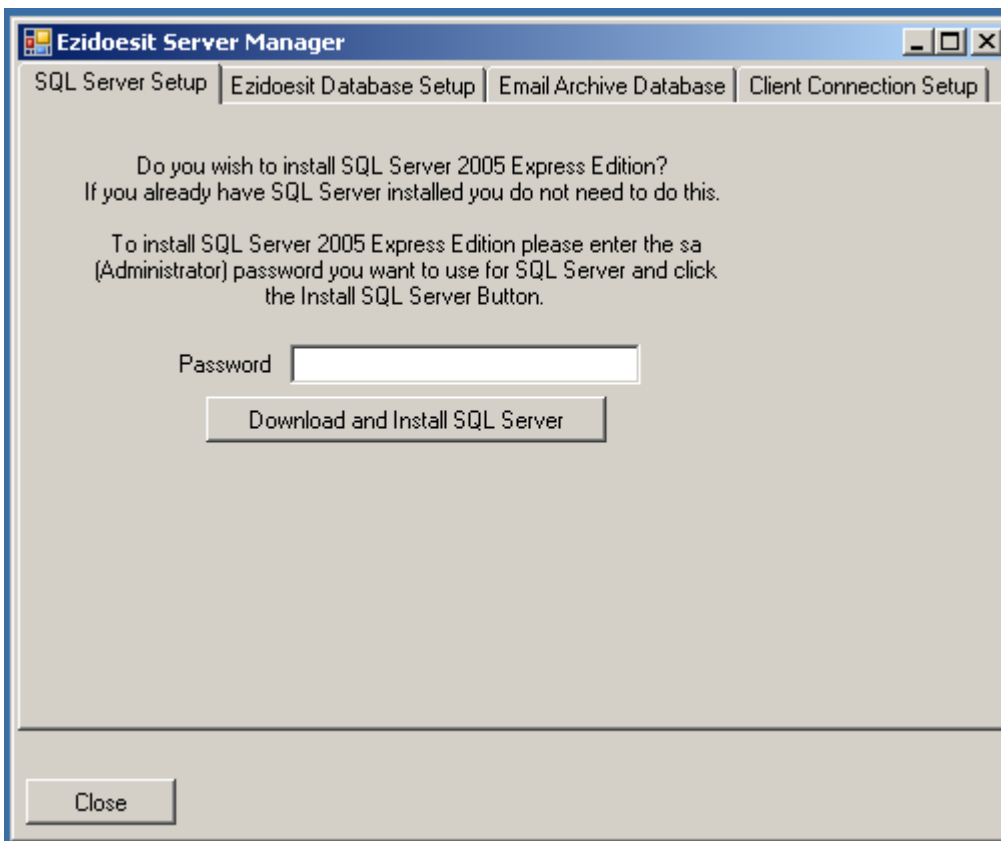
Browse to a folder to install Server Manager into or accept the default.



When the install is finished the Server Manager software is display on the Programs Menu.



Click on the Ezidoesit Server Manager option to start the software.



There are 4 tabs displayed as displayed above. Before you configure any options you must click on the Download and Install SQL Server option if you have not already installed or have a copy of SQL Server.

The button downloads a free copy of Microsoft SQL Server from the Microsoft website.

Ezidoesit Database Setup

The screenshot shows the 'Ezidoesit Database Setup' window. The title bar reads 'Ezidoesit Server Manager'. The window has four tabs: 'SQL Server Setup', 'Ezidoesit Database Setup' (active), 'Email Archive Database', and 'Client Connection Setup'. The main area is titled 'Setup the Ezidoesit database on your server'. It contains a 'Server' dropdown menu, a 'Logon' section with two radio buttons: 'Windows Authentication' (selected) and 'SQL Server Authentication'. Below the logon section are 'User' and 'Password' text boxes. A 'Database' text box contains the text 'Ezidoesit'. At the bottom of the main area are three buttons: 'Test Connection', 'Create Database', and 'Manage Users'. A 'Close' button is located at the bottom left of the window.

The Ezidoesit Database Setup Tab allows the user to configure the database.

The Server dropdown will be filled with the instances of SQL Server that are currently installed on the server which the user can pick from.

If the SQL instance they wish to use is not listed then they can type in the correct instance.

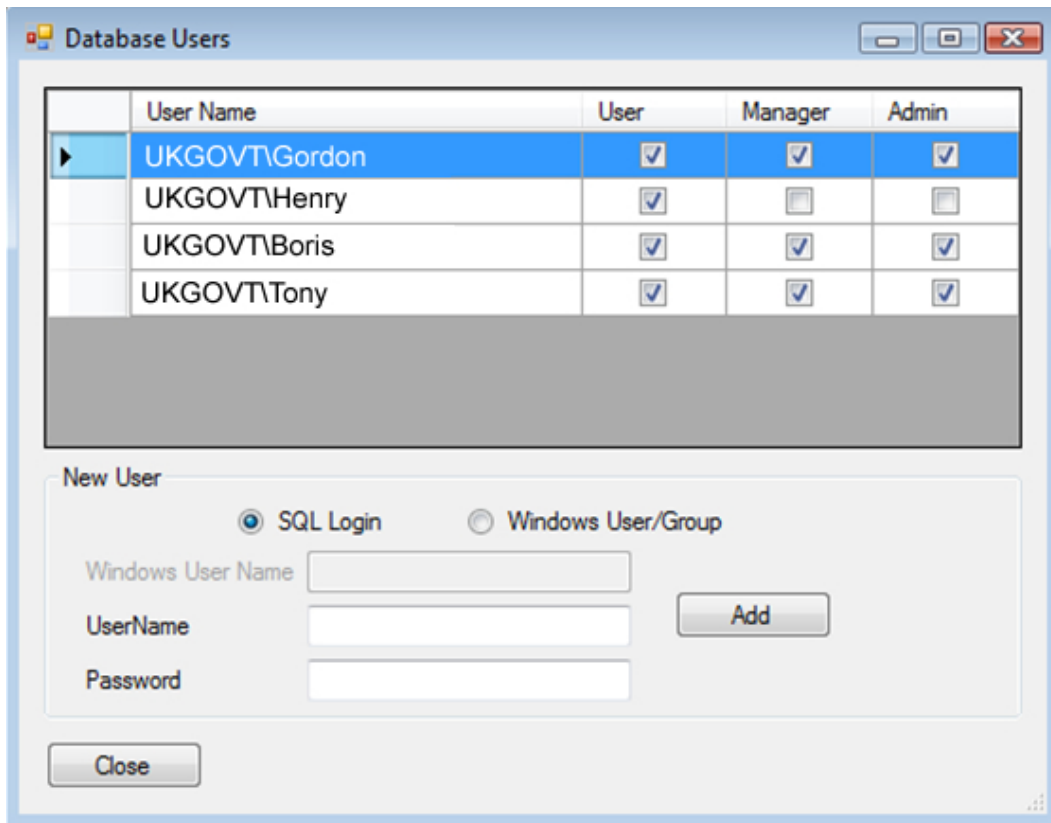
The database name is filled with Ezidoesit by default but can be changed to whatever the user wishes.

Clicking on Test Connection will attempt to connect to SQL Server and check for the existence of the named database.

The results of that will enable the other buttons.

1. If the database does not exist the Create Database button will be enabled. Clicking this will create the database.
2. If the database does already exist then the Manage Users button will be enabled. Click on the Manage Users button to open the User Management form.

User Management



This screen allows you to add and remove access to the Ezidoesit database. The users/groups that have access are listed in the table.

All users have User level access – this allows them to use the Ezidoesit client connected to this database.

In the screenshot above the UKGOVT\HENRY windows group has User access so all members of this group have user access to the database.

Manager access gives the user access to the Reports section in the Team Management Tools.
Admin access gives the user access to the Setup section of the Team Management Tools.

The Manager and Admin options can be configured independently of each other so you can have users who set up the teams/projects but cannot actually see any of the reports and users who can run the reports for the teams/projects they have access to but cannot change the team/project settings.

To remove a user, select the user in the table and either right click and select delete from the context menu or press the delete key.

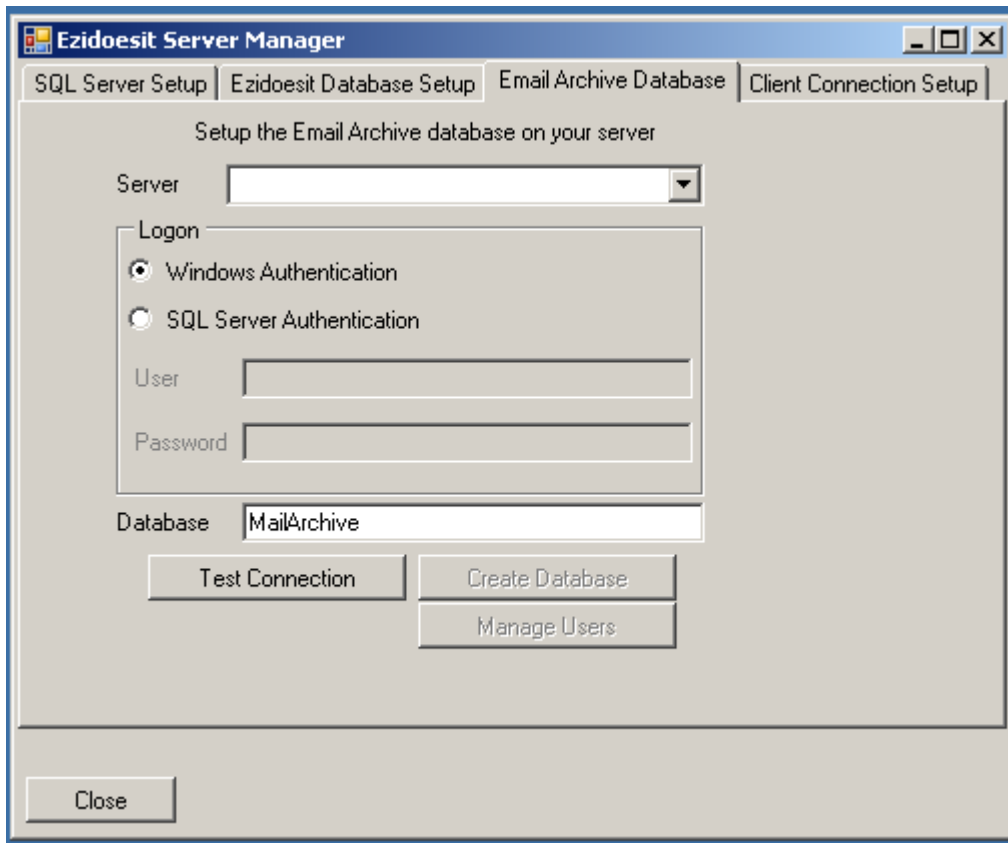
To add a new SQL Login, enter the username and password then click on Add.
The new user will appear in the table with User access.

To add a new Windows User/Group enter the Domain\Username and click on add.

When setting up Teams and Projects in the Team Management tool the individual users need to be linked to their respective SQL login details configured here to allow the security in the database to correctly identify the records that a specific user has access to.

Email Archive Database

This tab is used to setup the Email Archive database for the Email Archive option which is only in Ezidoesit Enterprise Edition.



The screenshot shows the 'Ezidoesit Server Manager' window with the 'Email Archive Database' tab selected. The window title is 'Ezidoesit Server Manager' and it has standard Windows window controls. The tab bar at the top includes 'SQL Server Setup', 'Ezidoesit Database Setup', 'Email Archive Database', and 'Client Connection Setup'. The main area is titled 'Setup the Email Archive database on your server'. It contains a 'Server' dropdown menu, a 'Logon' section with radio buttons for 'Windows Authentication' (selected) and 'SQL Server Authentication', and input fields for 'User' and 'Password'. Below these is a 'Database' text box containing 'MailArchive'. At the bottom of the main area are three buttons: 'Test Connection', 'Create Database', and 'Manage Users'. A 'Close' button is located at the bottom left of the window.

This is setup following the same process as the Ezidoesit Database Setup.

The Server dropdown will be filled with the instances of SQL Server that are currently installed on the server which the user can pick from.

If the SQL instance they wish to use is not listed then they can type in the correct instance.

The database name is filled with MailArchive by default but can be changed to whatever the user wishes.

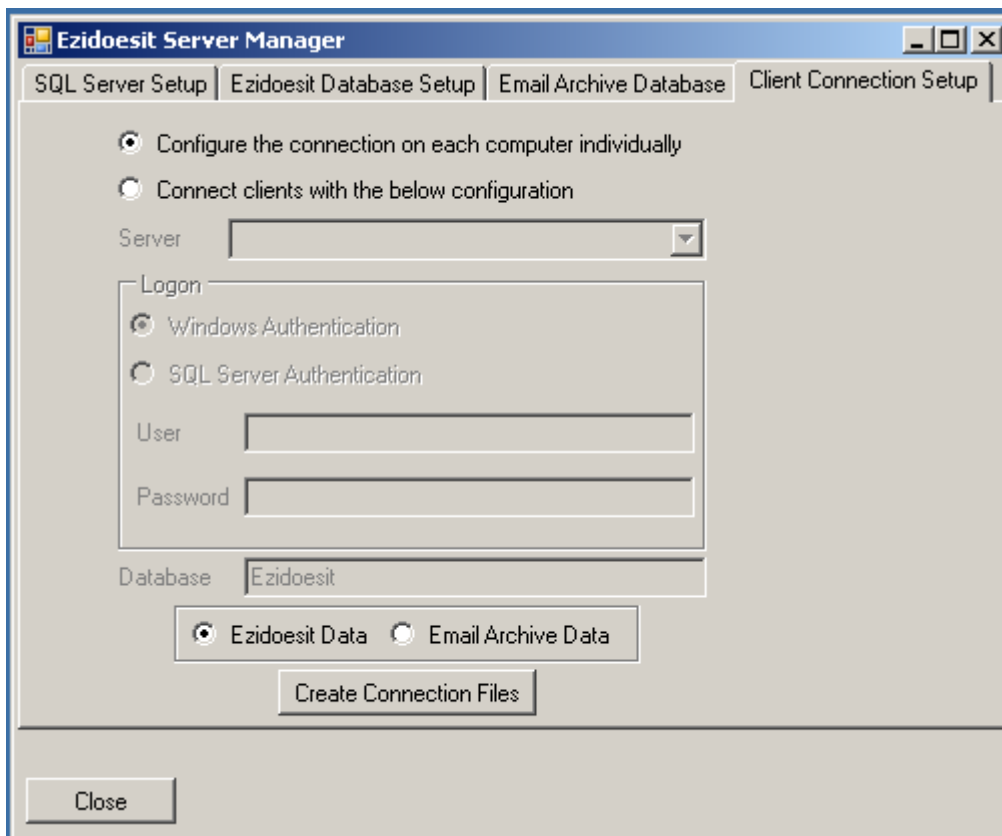
Clicking on Test Connection will attempt to connect to SQL Server and check for the existence of the named database.

The results of that will enable the other buttons.

1. If the database does not exist the Create Database button will be enabled. Clicking this will create the database.
2. If the database does already exist then the Manage Users button will be enabled. Click on the Manage Users button to open the User Management form.

Client Connection Setup

This tab is used to create the connection files used by the client installs

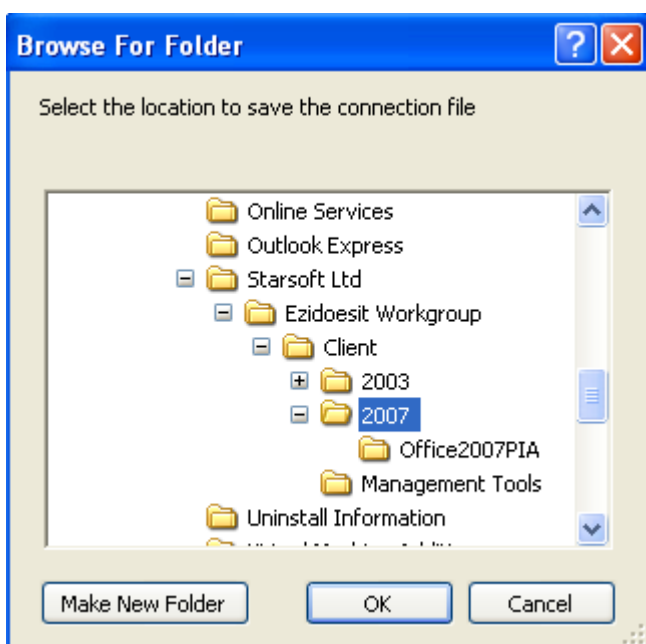


Using this page you enter the details of how the clients connect to both the Ezidoesit database and the Email Archive database.

Enter the SQL connection details and click on "Create Connection Files".

A dialog pops up asking you where to save the connection file.

Select the location where the install files for the Ezidoesit client are located.



If you select "Configure the connection on each computer individually" then the user will be asked for database connection details the first time Ezidoesit is run on their computer.

If you have entered any other details then Ezidoesit will use those connection details when it is run.

At any time you can create a new connection file and copy it to the "C:\Program Files\Starsoft\Ezidoesit" folder on a client machine to change the Ezidoesit connection information.

If multiple people are going to be logged into the same computer and using Ezidoesit then it is recommended that the SQL connection is configured to use Windows Authentication or the connection is configured on each computer individually.

Different users should connect with their own usernames and passwords at all times to enable the database security to function correctly.